

GEOGRAPHY TEST FOR ADVANCED LEVEL

GEOGRAPHY III (023)

PAPER III: PHYSICAL GEOGRAPHY

COMBINATION: HISTORY-ECONOMICS-GEOGRAPHY (HEG)

MATHEMATICS-PHYSICS-GEOGRAPHY (MPG)

BIOLOGY-CHEMISTRY-GEOGRAPHY (BCG)

LITERATURE-ECONOMICS-GEOGRAPHY (LEG)

HISTORY-GEOGRAPHY-LITERATURE (HGL)

MATHEMATICS- ECONOMICS-GEOGRAPHY (MEG)

DURATION: 3 hours

INSTRUCTIONS:

1. This paper consists of three sections **A, B** and **C**

SECTION A: This section is compulsory **55 marks**

SECTION B: Answer any three questions **30 marks**

SECTION C: Answer only one question **15 marks**

2. You must give explanations with relevant examples on essay type questions.
3. Use blue pen or black pen.

SECTION A: Attempt all questions

55marks

1. (a) What is the difference between sea breeze and land breeze? **/2 marks**
(b) Give two reasons to explain why temperature reduces with an increase in altitude in troposphere. **/2 marks**
(c) Differentiate between solar radiation and terrestrial radiation. **/2 marks**
2. (a) Briefly describe any three characteristics of plate tectonic. **/3 marks**
(b) Describe Wegner's evidences for continental drift. **/4 marks**
3. Explain the causes of river capture along the river valley. **/3 marks**
4. (a) What do mud cracks tell about the environment of deposition of a sedimentary rock? **/3 marks**
(b) Rock hardness is by far the most important factors in determining the rock resistance to weathering. Give the factors which influence rock hardness. **/4 marks**
5. (a) Explain the term "air mass". **/2 marks**
(b) Outline four types of air masses and give their sources of origin. **/4 marks**
6. State four factors that influence the formation of river meanders. **/4 marks**
7. (a) Why is glaciation limited to a few places in Africa. **/2 marks**
(b) Describe two conditions necessary for the formation of fog. **/2 marks**
8. What evidence is there to show that tectonic movements have influenced the drainage patterns of Rwanda? **/1 mark**
9. (a) What do you understand by the term "tropical cyclone"? **/2 marks**
(b) How do tropical cyclones influence the weather conditions of the areas they affect? **/4 marks**
10. (a) State two characteristics of stratus clouds. **/2 marks**
(b) State three effects of weather on human activities. **/3 marks**
11. (a) Define the term "delta". **/1 mark**
(b) Explain three conditions necessary for a river to form delta. **/3 marks**

(c) Explain two uses of deltas in Africa. /2 marks

SECTION B: Attempt any three questions /30 marks

12. What are the causes and consequences of avalanches? /10 marks

13. (a) Describe the factors that are responsible for aridity in East Africa. /5 marks

(b) Outline the steps taken to control desertification in East Africa. /5
marks

13. (a) State any four forms of physical weathering. /4 marks

(b) Explain how physical weathering and chemical weathering processes are interdependent. **/6 marks**

14. (a) Differentiate between chalk cliffs and coral reefs. /4 marks

(b) Explain six conditions for the formation of coral reef. /6 marks

15. (a) Explain four types of volcanic eruptions. /4 marks

(b) Assess the contributions of extrusive volcanic land forms to the development in East Africa. **/6 marks**

SECTION C: Attempt only one question. / 15 marks

17. Study the map extracted of Rwinkwavu and answers the questions that follow;

(a) Name the man-made features found at grid references; /**2marks**

i) 608855 ii) 584844

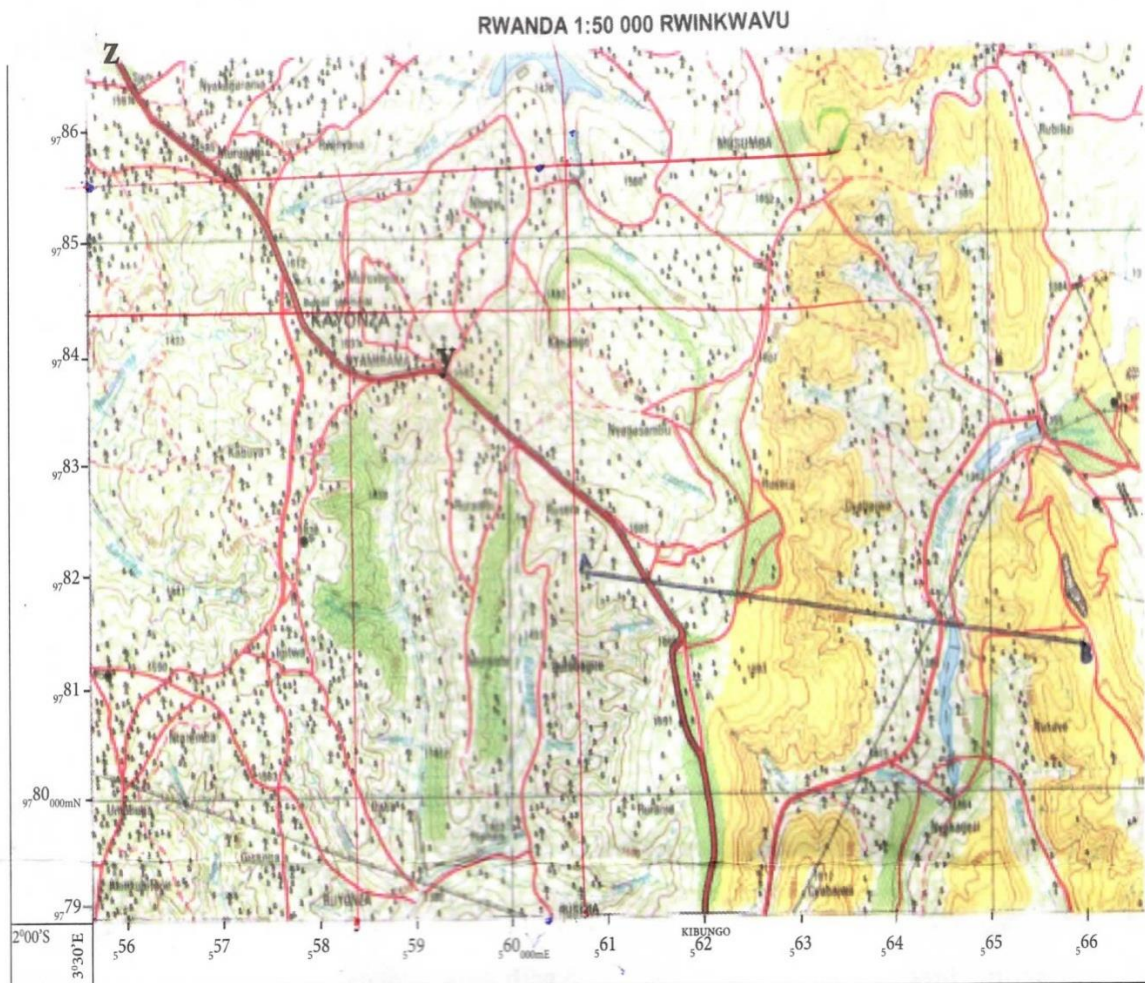
(b) Calculate the distance in kilometers from point Z to point Y on the map extract. **/2 marks**

(c) State the bearing of point A at grid reference (608821) from point B at grid reference (659816). **/3marks**

(d) Describe the relationship between the relief of the area covered by the map and:

i) Population settlement. /2 marks

ii) Transport network. /2 marks



SCALE/ECHELLE 1:50,000



	Main tarmac road Route nationale asphaltée		Dense/nucleated settlement, sparse, scattered Habitat concentré, dispersé, remarquable		Natural forest, plantation Forêt naturelle, boisement
	Main murrum road Route nationale non asphaltée		Hospital, health centre, dispensary Hôpital, centre de santé, dispensaire		Savannah or pasture. Savane ou pâturage
	Feeder road Route communale		Sectorial bureau, school, dipping tank Bureau de secteur, école, dipping tank		Upland crops, valley crops Cultures des collines
	Track Piste carrossable		Religious edifices: church, temple, mosque Edifices religieux: église, temple, mosquée		Rangeland, cash crop Prairie, cultures industrielles
	Path Sentier		Border post, market Poste de douane, marché		Papyrus
	Boulevard/road lined with trees Route bordée d'arbres		International airport, aerodrome/air strip Aéroport international, aérodrome		Bananas, sugar cane, coffee Bananier, canne à sucre, café
	Road under construction Route en construction		River Rivière		Rice, tea, cotton Riz, thé, coton
	Power/electric line Ligne de transport d'énergie électrique		Pond, marsh, a well Étang, mare, puits		Quinine, pyrethrum, bamboo Quinquina, pyrèthre, bambou
	Bridge, footbridge Pont en dur, pont en bois		Lake, swamp Lac, marais		Terraces Talus
	Contours Courbe de niveau		Falls, dam Chutes, barrage		Rock, cliff Rocher, abrupt
	Contours, contour intervals, depression Courbe de niveau, intercalaires, cuvette		Border pillar, radio booster station Borne frontière, antenne relais de radio		Trigonometrical pillar Détail particulier
	Quarry, factory and/or industrial complex Carrière, usine et/ou complexe industriel				Mine 1 operational 2 derelict Mine 1 en activité 2 arrêtée

18. Study the photograph provided and answer the questions that follow;



- (a) Identify the economics activity shown in the photograph. **/1 mark**
- (b) Describe the conditions which favor the growing of the crop shown in the photograph. **/4 marks**
- (c) Explain the importance of the crop to the economy of Rwanda. **/4 marks**
- (d) Explain the challenges faced by the farmers who grow the crop shown in photograph. **/4 marks**
- (e) Suggest two areas in Rwanda where this photograph could have been taken. **/2 marks**