

MINEDUC

NYANZA DISTRICT

SUBJECT: GEOGRAPHY/100 Marks

SENIOR 5

INSTRUCTIONS

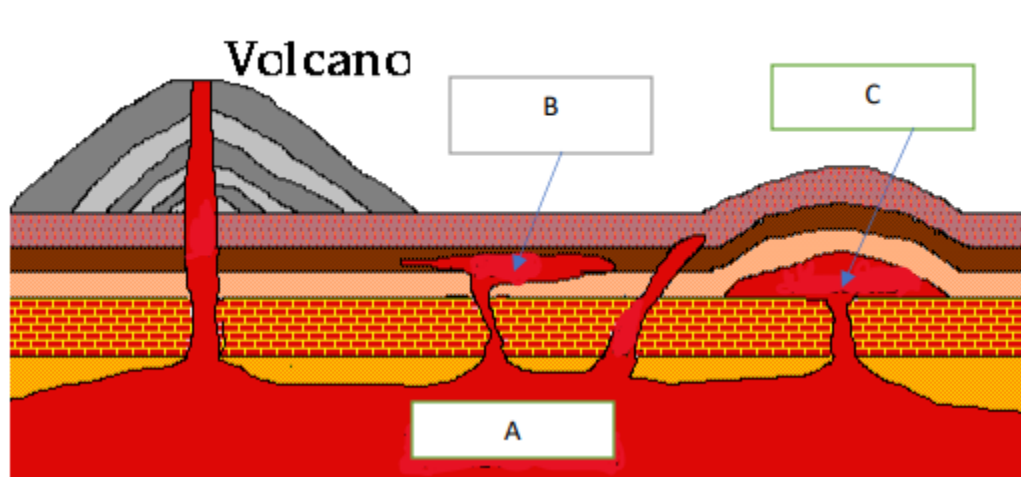
Attempt all questions

1. a) What is meant by the term Constellation? **(2marks)**
b) Outline the largest constellation as well as brightest constellation in milkyway galaxy **(2marks)**
2. a) At which latitude is the sun directly overhead at noon in the winter solstice of Southern Hemisphere? **(2marks)**

b) At which latitude is the sun directly overhead at noon on equinox? **(2marks)**
3. a) Enumerate the planets composing the solar system and classify them in their groups / **5marks**

b) Among those planets of solar system, enumerate the largest and smallest respectively **(2marks)**
4. Explain the reasons why Pluto was disqualified among the planet of solar system from 2006? **(3marks)**
5. What does it mean a **Leap Year**? Give at least one example of a leap year **(3marks)**
6. What does it mean a Rift valley Lake? Describe any three characteristics of Rift Valley Lakes **(5marks)**

7. Revolution of the earth may cause the eclipse on the Moon known as Lunar Eclipse. With a well labelled diagram, Describe the Lunar Eclipse **(4marks)**
8. If on Kigali City located at 30°E , it is 9PM, What is the longitude of Vancouver City if it is 11h:00AM? **(5marks)**
9. The diagram below shows some of the features that form as a result of vulcanicity. It contains both intrusive and extrusive landforms



- a) Names the landforms shown in the diagram above represented by the letters: A, B and C **(3marks)**
 - b) Describe how any two of those features outlined on a) above are formed **(2marks)**
 - c) Evaluate the positive effects of vulcanicity on economic activities of people living nearby **(5marks)**
10. a) Study the table below and match the statements with the appropriate peculiar element of the earth **(4marks)**

Peculiar elements of the earth	Description
Biosphere	Stands for water bodies

Lithosphere	Gases or air that surrounds our earth
Atmosphere	Deals with flora and fauna
Hydrosphere	Rocks and land

b) Suppose you are appointed as Minister of environment and natural resources. Describe the programs or ways you would emphasize to ensure that the planet Earth remains habitable **(6 marks)**

11. Read the story below and use it to answer the questions that follow:

Micomyiza Jeanne and Habinshuti Gilbert made their field study on “The effects of human activities on the physical environment in Twubahane village. They used various methods of data collection. Jeanne was interested in writing down every observed aspect in a descriptive manner while Gilbert filled his note book with tables and charts that he would interpret after the field trip. Some other students, who had also attended the fieldwork study, used various methods of noting down data, such as line graphs, bar graphs with description foot notes. They could look at the graphs and charts drawn and easily understand the content contained therein. The collected numerical data revealed that 12 farmers were using poor methods of farming, 20 farmers had applied agro-forestry and tree planting, 2 farmers were engaged in charcoal burning, 7 people had large herds of cattle whose impact on the environment was so evident. All such data collect as a group was presented and recorded on a chart.

Now answer the following questions

- Explain why most of students were interested in using statistical way of data recording? **(2marks)**
- Does the passage above represent statistics? Explain your answer. **(3marks)**
- Using the example of Habinshuti, examines the importance of statistical graphs and diagrams in Geography. **(5marks)**

12. “The planet Earth is not flat but a sphere”. With evidences, Support this statement (10marks)

13. The weather station of a city of Nice in France records the following temperature and precipitation in a table below;

Months	J	F	M	A	M	J	J	A	S	O	N	D
T ^o C	-6	-2	6.5	9	16.3	19.4	20.6	18.4	15.7	10.2	5.3	-1
P(mm)	15	32	53	65	75	85	70	78	68	50	43	35

a) Calculate the Annual Mean Temperature of this station (2marks)

b) Calculate the Annual Total Rainfall of this station (2marks)

c) Construct a rainfall temperature graph of this station (6marks)

14. a) Identify the boundaries that separate the crust from the mantle and the mantle from the core (2 marks)

b) With illustrations, explain internal structure of the earth. (8marks)

15. Study the map of BYUMBA, in Northern Rwanda and answer the following questions:

a) i) State the grid reference of Market near MUKARANGE (1mark)

ii) What is a feature found at grid reference of 060247? (1mark)

b) Calculate the bearing of a feature at grid reference 018272 from grid reference 052238 (2marks)

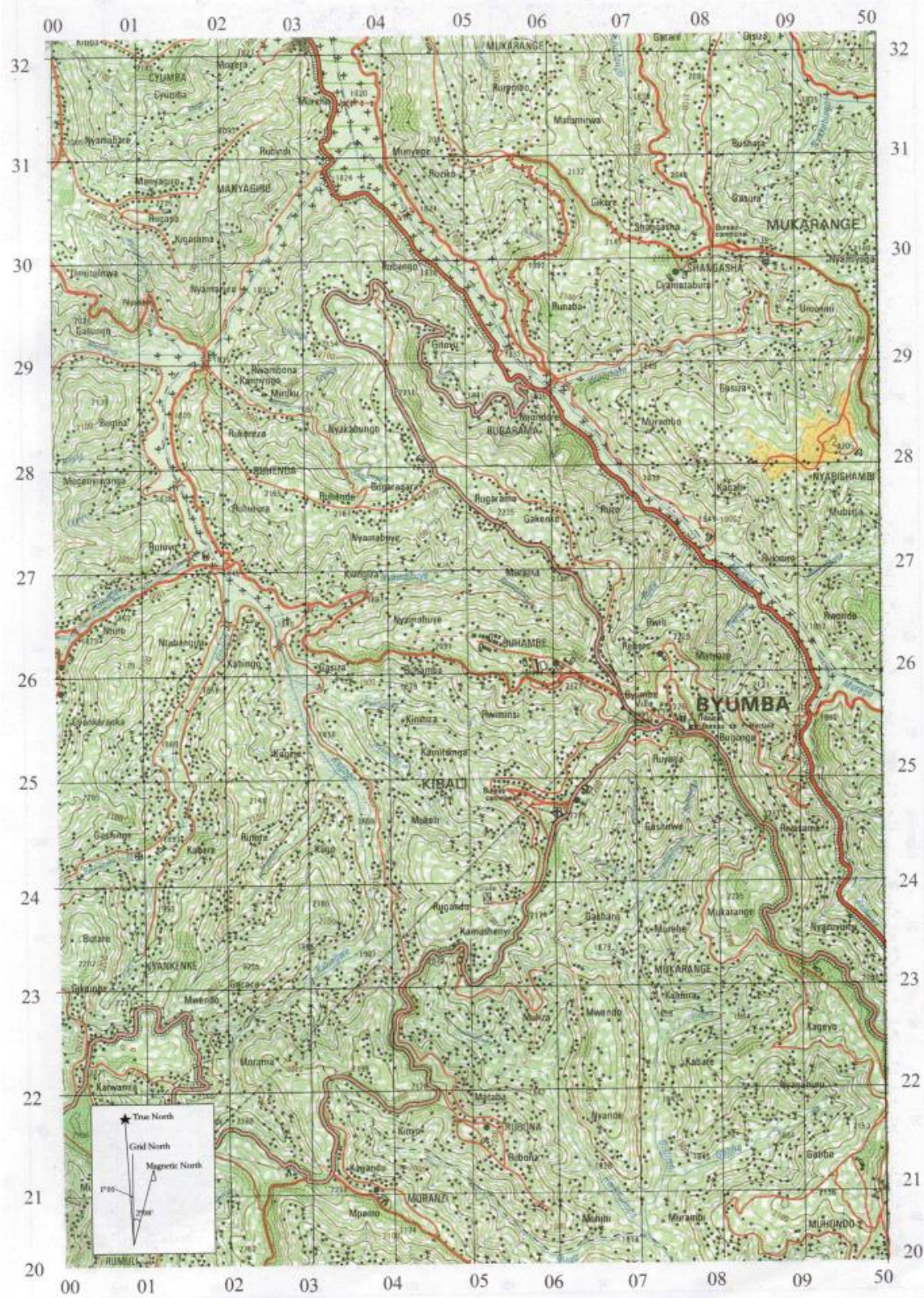
c) With evidences, examine the activities practiced in the area where this map was extracted (3marks)

d) What are the contributions of those activities to the development of neighbouring population? (4marks)

e) Explain the relationship between

ii) relief and settlement in the area shown on the map **(2marks)**

**ii) Transport and settlement in the area shown on the map
(2marks)**



Chronological order: from routes (road)

Chronological order: from routes (road)

	Trunk road: tarmacked		Elevation Contours (above sea level) Inter relief contours		Stream, Tākieg (term meaning: water flow: Geamian etymology)		Settlement, Highly Populated Spacely Populated
	Trunk road: murrain		Slope		River		Hospital, Health Centre, Dispensary
	Feeder road:		Rock, cliff		Pond, pool, well		Administrative Office, School, Dipping Tank
	Motorable route		Specific detail Border pillar,		Lake, swamp		Post and Telecommunications, Relay Station
	Foot path		radio relay antenna		Falls, rapids, dam		Religious buildings
	Tree-lined road		1228: Documented elevation point		Water mains		Chapel, Cemetery
	Road under construction		1 2: Mines: 1 active: 2 dormant		Protected spring, water pool		Customs Post
	Electric power line		Quarry, factory or industrial complex		Enclosure, tree lane		International Air Port, Aerodrome
	Permanent bridge, temporary bridge		Highland crops, lowland crops		Forest canopy		Lighthouse
	Natural Forests		Plains, industrial crops		Papyrus		
	Dry savannah, humid savannah						
	Banana, Sugar cane, Coffee		Rice, Tea, Cotton		Quinquina, Pyrethrum, Bamboo		